

HEIGHTS  
ALDAU



EXPERIENCE *The Warmth*



HEIGHTS  
ALDAU



EXPERIENCE *The Warmth*



# ABOUT

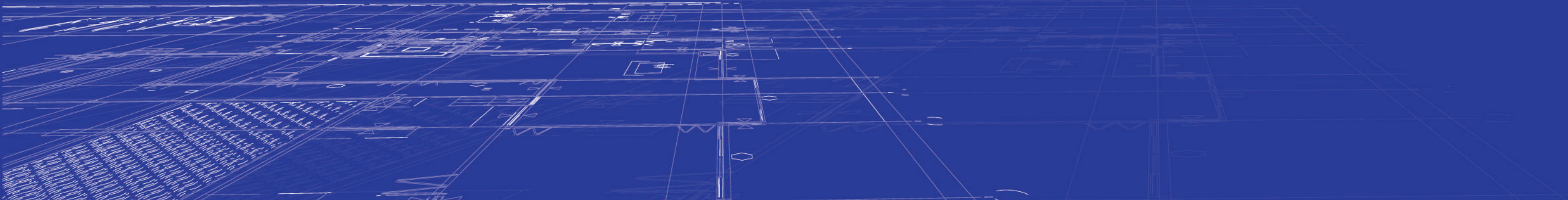
## ALDAU DEVELOPMENT

---

ALDAU Development is a subsidiary of “Sami Saad Holding” which was founded back in 1963.

Since its foundation, the company has had remarkable footprints on the path of evolution and growth until it became one of Egypt’s largest private holding companies, offering diverse services covering up some of the most critical sectors of the Egyptian economy like construction “Samcrete”, automotive “Mercedes Benz”, fast moving consumer goods “Corona” chocolate, and a number of reputable real estate projects.

---





# ACHIEVEMENTS



STEINGENBERGER ALDAU BEACH HOTEL, HURGHADA



STEINGENBERGER PURE LIFE STYLE, HURGHADA



STEINGENBERGER AQUA MAGIC, HURGHADA

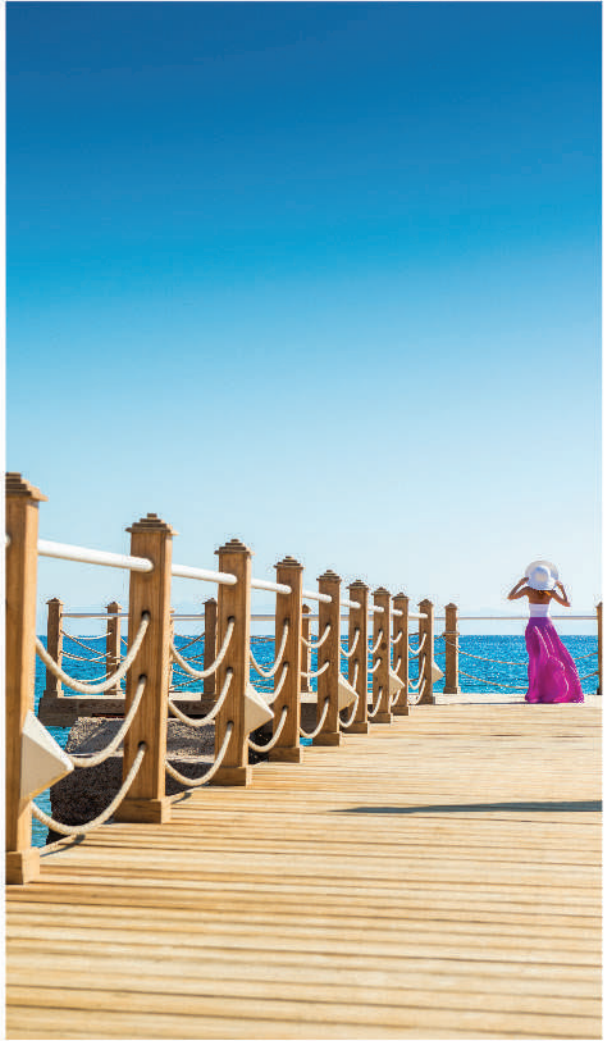


HYATT REGENCY CAIRO WEST, CAIRO

ALDAU Development operates two divisions: Real Estate & Hospitality. We take pride in our superior hotel properties: Steinger ALDAU Beach Hotel, Steinger Aqua Magic and Steinger Pure Lifestyle, in addition to “ALDAU International Conference Center” and “ALDAU Art Promenade” all in Hurghada, and the newly opened Hyatt Regency Cairo West and continues to grow internationally with the successful development of “Holiday Inn London West” in London, United Kingdom.

Our Real Estate projects have earned an unparalleled reputation for bringing hospitality excellence into real estate. The portfolio of ALDAU Development Real Estate includes ALDAU Heights, ALDAU Strand both projects have unique locations & stunning sceneries are true reflection of the group’s ideology in developing residential projects perceived as best-in-class developments, Along with ALDAU Village Mall the most stunning commercial hub in Hurghada.





# HURGHADA, RED SEA



In a world like ours where the sunshine reflects on the golden sands and the turquoise “Red Sea”, You will experience the warmth all year round in your coastal home.

Hurghada is the home to watersports lovers, including snorkelers, scuba divers, kite surfers and windsurfers, In addition to water activities.



# ALDAU HEIGHTS

---

Crafted by international architects specializing in luxury resorts around the world, apartments range in sizes from studios to penthouses and are all constructed in accordance with the highest international specifications with regards to finishing and safety.

The entire project enjoys breathtaking views over the sea, greeneries, walkways and water features.



LIVE  
FOOTAGE



# LOCATION



SAHL HASHEESH

HURGHADA  
TOURISTIC  
PROMENADE  
HEIGHTS  
**ALDAU**

HURGHADA  
INTERNATIONAL  
AIRPORT

DOWNTOWN  
HURGHADA

EL GOUNA

RED SEA

HURGHADA



Icon	Time
	
Banks District	2 mins
Hurghada Marina	7 mins
Hurghada International Airport	9 mins
Steigenberger ALDAU Resort	9 mins
ALDAU Art Promenade	9 mins



# LOCATION



- ALDAU HEIGHTS
- ALDAU VILLAGE MALL
- HURGHADA GATEWAY
- ALDAU STRAND
- AIRPORT ROAD





ALDAU  
VILLAGE MALL



## ALDAU VILLAGE MALL

ALDAU Village Mall is one-of-a-kind experience in Hurghada; it is set to be Hurghada's main shopping and entertainment hub. The mall comprises indoor and outdoor areas, which gives the visitors a unique feel.

ALDAU Village Mall enjoys a prime location, amongst the main attractions of the city, the mall also brings the best of the local and international retail and recreational options under one roof. Aiming to uplift the shopping experience in Hurghada to a luxurious one for tourists and residents.

The mall is set to become Hurghada's main shopping and entertainment hub.

---



# PROJECT OVERVIEW













# PHASE - I

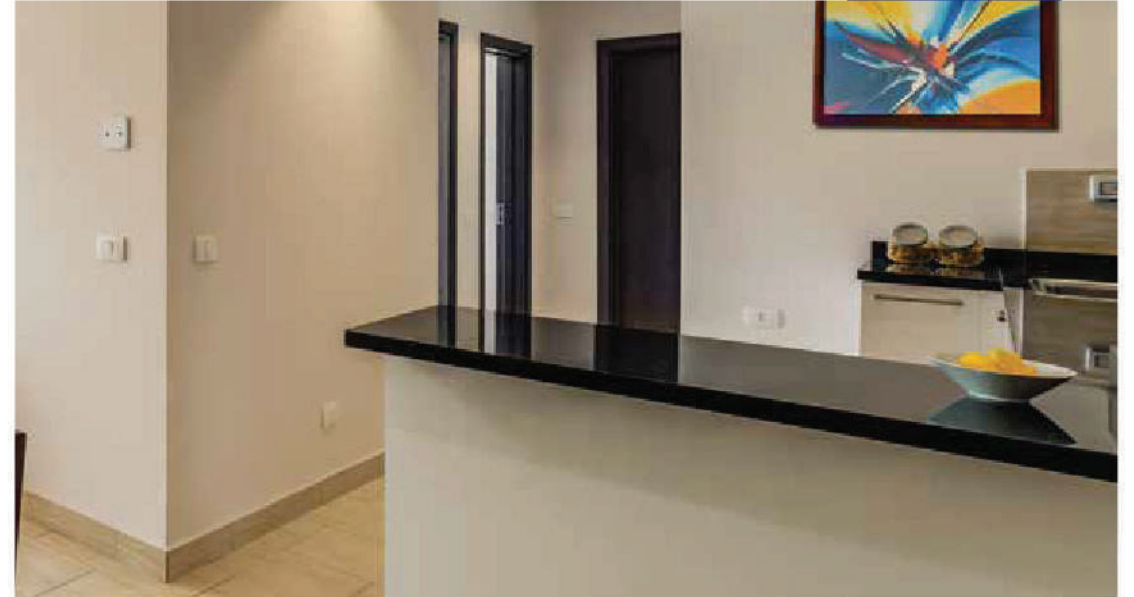
LIVE  
FOOTAGE







LIVE  
FOOTAGE





**UNIT**

**TYPES**

**STUDIO  
TYPE A I**





**UNIT**

**TYPES**

**STUDIO  
TYPE A**





**UNIT**

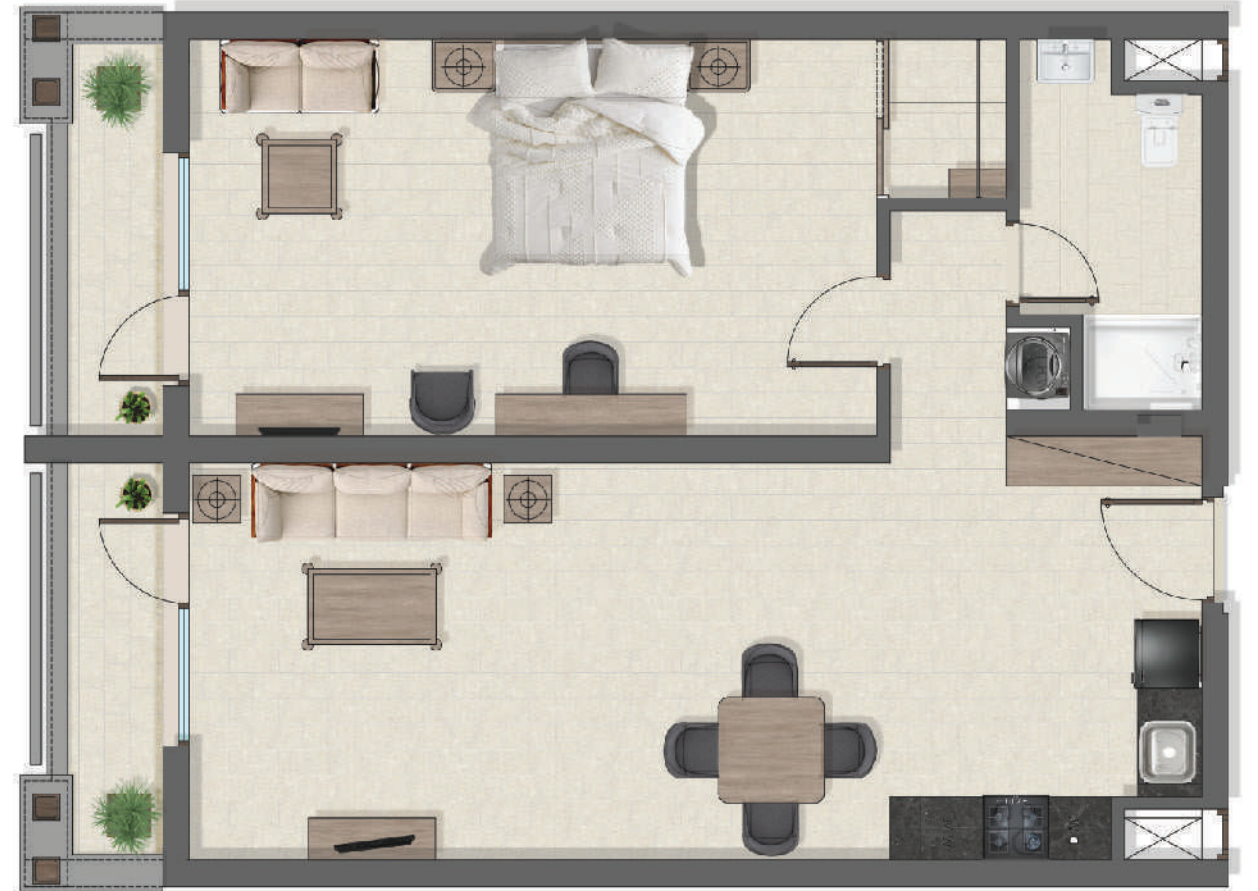
**TYPES**

**1 BEDROOM  
TYPE B**





1 BEDROOM  
TYPE B1



UNIT

TYPES



**UNIT**

**TYPES**

**1 BEDROOM  
TYPE G**





**UNIT**

**TYPES**

**1 BEDROOM  
TYPE D**





1 BEDROOM  
TYPE H



UNIT  
TYPES



**UNIT**

**TYPES**

**2 BEDROOM  
TYPE C**





**UNIT**

**TYPES**

**3 BEDROOM  
TYPE F**





# PARTNERS



Strategic Planer



Architectural Designer



Landscape Designer



Electromechanical Consultant



Wayfaring and signage



Architectural Consultant



Structural Consultant



**ALDAU**  
DEVELOPMENT

## Cairo

Building C8, Pyramids Heights Business Park  
Cairo Alexandria Desert Road, KM 22

## Red Sea

ALDAU Village Mall, El Moahamadi Hweidak  
Square, Hurghada

## London

4 Portal Way, Acton  
London W3 6RT, UK

☎ 16492

[www.aldaudevelopment.com](http://www.aldaudevelopment.com)